

PESTOPTIX®

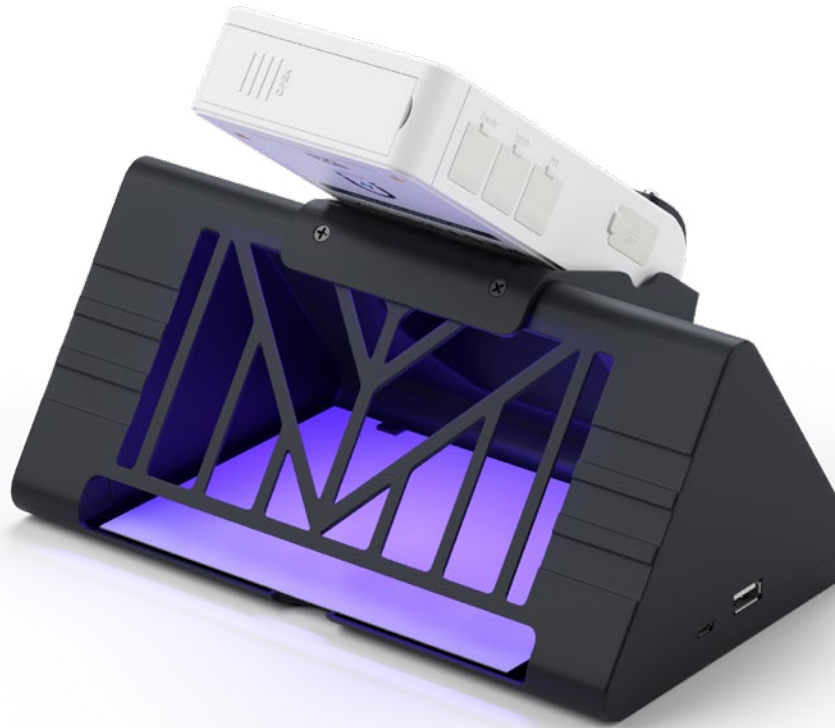
ANYPEST

MONITOR AND IDENTIFY BOTH CRAWLING AND FLYING PESTS

PestOptix AnyPest is an internal pest monitoring device to monitor for both crawling and flying insects. It contains a UVA LED light to attract flying insects that can be turned off when used as a floor unit. Plus, it incorporates the PestOptix Camera to track and count which insects are captured in the trap. The Artificial Intelligence (AI) identifies the pests and sends alert notifications by text and email.

DIMENSIONS:

Station: 7.70 in L x 4.06 in W x 3.07 in H



AI-ENABLED



At the core of PestOptix is an artificial intelligence (AI) enabled cloud-based software. Similar to popular AI systems like Apple Siri® or Amazon Alexa®, PestOptix AI is comprised of sophisticated algorithms that have been trained to react to inputs. The AI software monitors the image inputs taken from camera sensors in traps in real time. When a pest enters a trap, PestOptix AI uses facial recognition algorithms to identify the pest type and alerts pest management professionals.

PestOptix® AnyPest – Vesperis #846994



pestoptix.com

Distributed Exclusively by **VESERIS™**

© 2021 ES OpCo USA LLC. All Rights Reserved. The Vesperis mark, logo, and other identified trademarks are the property of ES OpCo USA LLC or its affiliates.

PESTOPTIX[®]

— ANYPEST —

AI-RECOGNITION OF MULTIPLE INSECTS:

- Indian meal moth and other moths
- Tobacco beetle and flour beetle
- American and German cockroach
- Flies
- Drain flies

- The device features strong construction that holds up to the harshest environments.
- Due to its small footprint, it fits into tight areas where other systems might not work.



For ease of use, the device is powered by a simple USB connector. You can choose to work with pheromones using a battery powering the PestOptix camera only, without USB to power the UVA light source.



Holds pheromones on glue boards for storage pests. To catch crawling insects, the device can be placed on a shelf, the floor or attached to floor/wall junctions.



A powerful UVA LED light attracts flying insects to the device.



PestOptix camera screws into the base of AnyPest.



The device features a wide opening that allow insects easy access to the unit.



To catch flying insects, the device can be mounted to a wall.