

PESTOPTIX[®]

AI POWERED

A STATE-OF-THE-ART SOLUTION

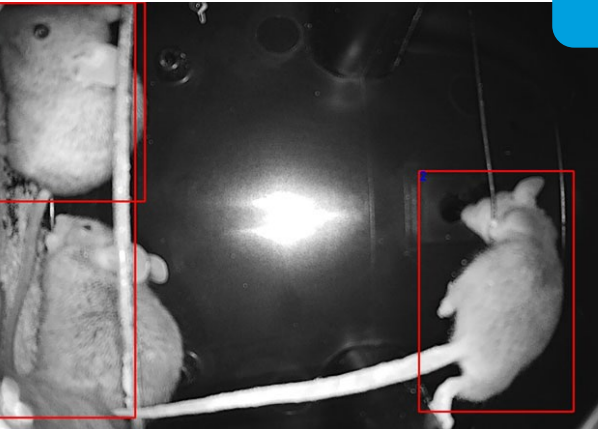
PestOptix utilizes a camera and advanced software to not only capture rodent activity, but leverage advanced AI capabilities to identify rodents. It even gives you insights into future rodent behavior. With PestOptix, pest management professionals can know what is happening at a site before they arrive. That way, they can have the right tools and plan for the job, achieve shorter site visits, and resolve issues before they get out of hand. PestOptix can even help you solve underlying issues that cause pest problems, preventing future issues and callbacks.

DIMENSIONS:

Camera with PIR: 3 in L x 1.22in W x 7.12 in H



AI-ENABLED



At the core of PestOptix is an artificial intelligence (AI) enabled cloud-based software. Similar to popular AI systems like Apple Siri[®] or Amazon Alexa[®], PestOptix AI is comprised of sophisticated algorithms that have been trained to react to inputs. The AI software monitors the image inputs taken from camera sensors in traps in real time. When a pest enters a trap, PestOptix AI uses facial recognition algorithms to identify the pest type and alerts pest management professionals.

PestOptix[®] Wi-Fi Camera - Vesperis #842880



pestoptix.com

Distributed Exclusively by **VESERIS[™]**

© 2021 ES OpCo USA LLC. All Rights Reserved. The Vesperis mark, logo, and other identified trademarks are the property of ES OpCo USA LLC or its affiliates.

PESTOPTIX[®]

AI POWERED

DAILY STATUS UPDATE

Due to its small footprint, it fits into tight areas where other systems might not work.

MULTIPEST RECOGNITION

Only platform that allows multipest recognition, including rodents, flying insects, crawling insects, and larger animals.

REMOTE COMMANDS

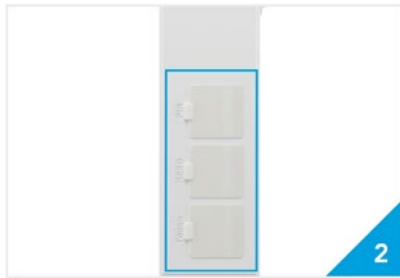
Remote “push” image on demand. Select the “Get pic” radio button in the app or on the dashboard.

SERVICE RECORDS

Provides convenient record of service.



Motion-activated 2MP camera captures images within a 30-degree radius on each side. Integration of both white and infrared LED for day and night vision.



Multi-sensory design (PIR, reed and touch) for real-time rodent and pest detection.



Passive Infrared Sensor (PIR) and three infrared flashes work in tandem to detect dark space rodent activity.



Equipped with multiple network configurations suitable for any environmental condition.



Multiple power options including battery or Micro USB charging.



Mountable for additional flexibility in any environment.