

PESTOPTIX®

EZ SECURED

THE COMBINED POWER OF A BAIT STATION, CAMERA, AND AI SOFTWARE

PestOptix EZ Secured® combines the proven EZ Secured® rodent bait station with an integrated PestOptix camera, which provides real-time, AI-powered detection and identification of rodents when they enter the station. This enables you to be better prepared when you arrive on site, and proactively address potential issues in the area of the station.

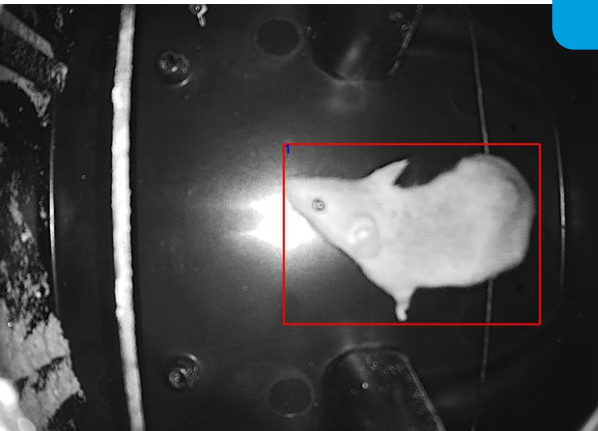
DIMENSIONS:

Station on block: 13 in L x 7.55 in W x 9 in H

PestOptix housing: 7.87 in L x 1.88 in W x 3.77 in H



AI-ENABLED



At the core of PestOptix is an artificial intelligence (AI) enabled cloud-based software. Similar to popular AI systems like Apple Siri® or Amazon Alexa®, PestOptix AI is comprised of sophisticated algorithms that have been trained to react to inputs. The AI software monitors the image inputs taken from camera sensors in traps in real time. When a pest enters a trap, PestOptix AI uses facial recognition algorithms to identify the pest type and alerts pest management professionals.

PestOptix® EZ Secured - Vesperis #846993



pestoptix.com

Distributed Exclusively by **VESERIS™**

© 2021 ES OpCo USA LLC. All Rights Reserved. The Vesperis mark, logo, and other identified trademarks are the property of ES OpCo USA LLC or its affiliates.

PESTOPTIX[®]

EZ SECURED



Utilizes a weather-resistant housing customized for the PestOptix camera that securely attaches to the lid.



The housing is easy to open via a simple screw that allows for direct access to the on/off switch and batteries.



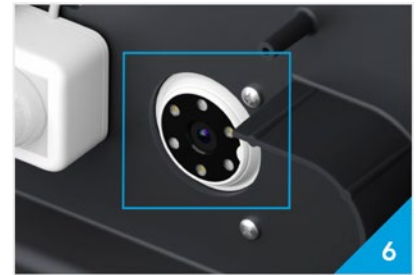
The bottom of the housing contains a gasket that keeps water from getting into the station and housing.



Inside the station, the housing is secured via four screws creating a tight, secure fit.



Sensors measure heat and movement, which triggers the camera. The image is then run through the AI program, generating alerts when rodents are present.



The camera is positioned directly over the bait area for an ideal view of rodents.



The housing has the ability to accommodate a private label.